

Cobra MARINE®

Owner's Manual



MR F45-D

Class-D Fixed Mount VHF Radio

Nothing Comes Close to a Cobra®

English



Introduction

Our Thanks To You

Thank you for purchasing a CobraMarine® VHF radio. Properly used, this Cobra® product will give you many years of reliable service.

How Your CobraMarine VHF Radio Works

This radio is a VHF transceiver for fixed mounting on your boat. It gives you 2-way vessel-to-vessel and vessel-to-shore station communications, primarily for safety and secondarily for navigation and operational purposes. With it, you can call for help, get information from other boaters, talk to lock or bridge tenders and make radiotelephone calls to anywhere in the world through a marine operator.

Besides 2-way communications, in the U.S.A., the radio can provide quick access to receive seven NOAA (National Oceanographic and Atmospheric Administration) and two Canadian weather channels for alerting you to weather emergencies with a tone on a weather channel you can select for your area.



Customer Assistance

Customer Assistance

Should you encounter any problems with this product, or not understand its many features, please refer to this owner's manual. If you require further assistance after reading this manual, Cobra Electronics offers the following customer assistance services:

For Assistance In The U.S.A.

Automated Help Desk English only.

24 hours a day, 7 days a week 773-889-3087 (phone).

Customer Assistance Operators English and Spanish.

8:00 a.m. to 5:30 p.m. Central Time Mon. through Fri. (except holidays)
773-889-3087 (phone).

Questions English and Spanish.

Faxes can be received at 773-622-2269 (fax).

Technical Assistance English only.

www.cobra.com (on-line: Frequently Asked Questions).
English and Spanish. productinfo@cobra.com (e-mail).

For Assistance Outside The U.S.A.

Contact Your Local Dealer

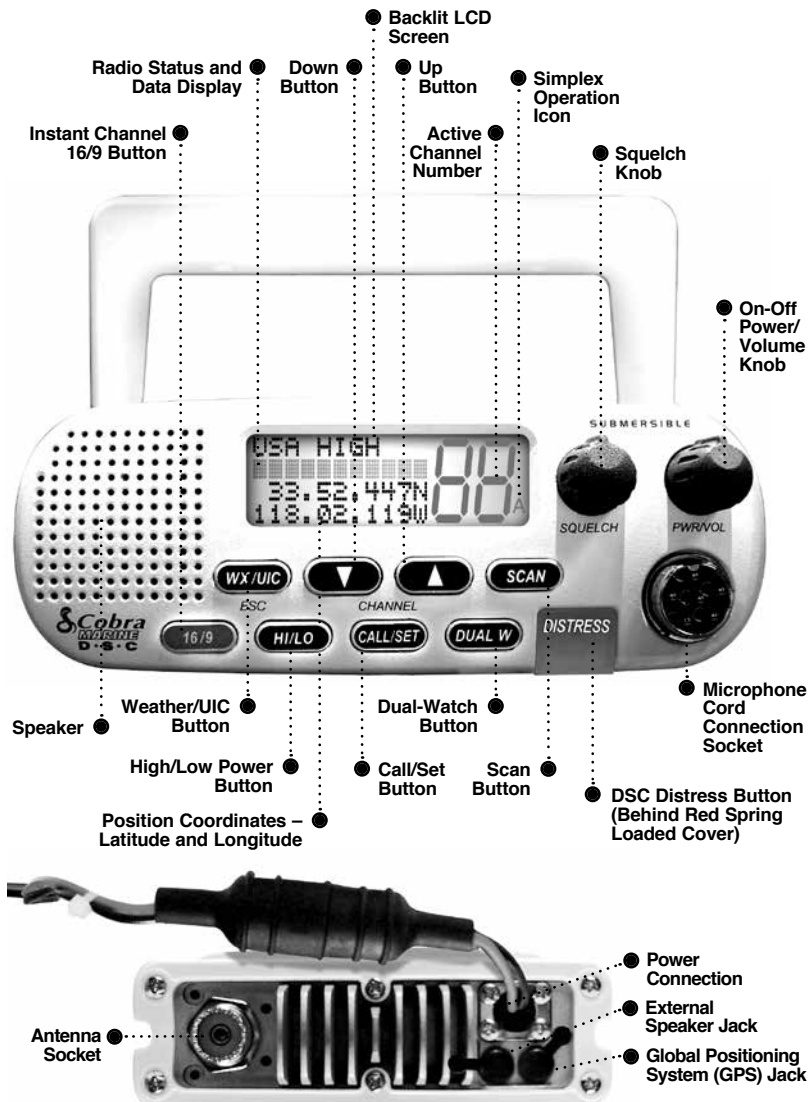
© 2015 Cobra Electronics Corporation
6500 West Cortland Street
Chicago, Illinois 60707 USA
www.cobra.com



English

Transceiver Controls, Indicators And Connections

Introduction



- Backlit LCD Screen
- Radio Status and Data Display
- Instant Channel 16/9 Button
- Down Button
- Up Button
- Active Channel Number
- Simplex Operation Icon
- Squelch Knob
- On-Off Power/Volume Knob
- Speaker
- Weather/UIIC Button
- High/Low Power Button
- Position Coordinates – Latitude and Longitude
- Dual-Watch Button
- Call/Set Button
- Scan Button
- DSC Distress Button (Behind Red Spring Loaded Cover)
- Microphone Cord Connection Socket

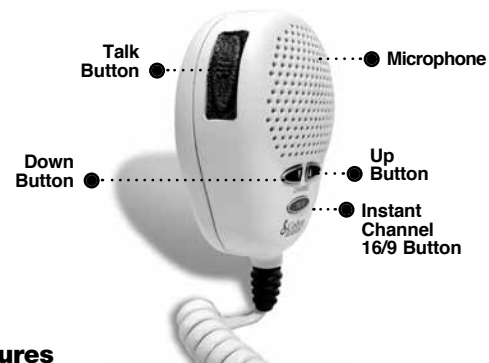
Microphone And Product Features

Introduction

Microphone With Auxiliary Controls

Up/Down Buttons
Can be used instead of those on the transceiver.

Instant Channel 16/9 Button
Can be used instead of the one on the transceiver.



Product Features

Dual Power
Selectable to one (1) or 25 watts output power for near or distant calling.

USA/International/Canada Channels
Allows operation on any of the three (3) different channel maps established for these areas.

All NOAA Weather Channels
Instant access to all of the National Weather Channels, 24 hours a day.

Emergency Weather Alert
Can alert you with an audible tone and visual alarm if threatening weather is nearby.

Instant Channel 16/9
Instant access to the priority Channel 16 and calling Channel 9.

Digital Selective Calling (DSC Class-D)
Allows the ability to maintain a listening watch on VHF Channel 16 while simultaneously monitoring Channel 70 for DSC calls. Allows sending a distress message at the touch of a button as well as specific station-to-station calls. Radio utilizes two (2) built-in encoders (receivers).

Scan
Lets you scan through all channels in the active channel map to find conversations in progress.

Dual-Watch
Lets you monitor two (2) channels at once — Channel 16 and one (1) user selectable channel.

Controls On The Microphone
Handy control buttons on the microphone let you operate one (1) handed at a distance from the radio.

Illuminated Buttons
Helps you quickly find the buttons you need in low light conditions.

Mounting Kits Included
Radio can be mounted on or under almost any flat surface using one (1) of the included brackets.

Waterproof
Submersible to one (1) meter of water for 30 minutes — meets JIS7 Standards.



Emergency Messages And Distress Procedure

The ability to summon assistance in an emergency is the primary reason to have a VHF marine radio. The marine environment can be unforgiving, and what may initially be a minor problem can rapidly develop into a situation beyond your control.

The Coast Guard monitors Channel 16, responds to all distress calls, and coordinates all search and rescue efforts. Depending on the availability of other capable vessels or commercial assistance operators in your vicinity, Coast Guard or Coast Guard Auxiliary craft may be dispatched.

In any event, do communicate with the Coast Guard as soon as you experience difficulties and before your situation becomes an emergency. Use the emergency message procedures only after your situation has become grave or you are faced with a sudden danger threatening life or property and requiring immediate help. Use channel 16 to communicate your emergency message. Make sure you transmit on high power. If you are merely out of gas, do not send an emergency message. Drop your anchor and call a friend or marine to bring the fuel you need or to give you a tow.



Marine Emergency Signals

The three (3) spoken international emergency signals are:

MAYDAY

The distress signal **MAYDAY** is used to indicate that a station is threatened by grave and imminent danger and requests immediate assistance.

PAN

The urgency signal **PAN** is used when the safety of the vessel or person is in jeopardy. (This signal is properly pronounced pah-n.)

SECURITE

The safety signal **SECURITE** is used for messages about the safety of navigation or important weather warnings. (This signal is properly pronounced see-cure-it-tay.)

When using an international emergency signal, the appropriate signal is to be spoken three (3) times prior to the message.

If You Hear A Distress Call

You must give any message beginning with one (1) of these signals priority over any other messages. **ALL** stations **MUST** remain silent on Channel 16 for the duration of the emergency unless the message relates directly to the emergency.

If you hear a distress message from a vessel, stand by your radio. If it is not answered, **YOU** should answer. If the distressed vessel is not nearby, wait a short time for others who may be closer to acknowledge. Even if you cannot render direct assistance, you may be in a position to relay the message.



Marine Distress Procedure

Speak slowly — clearly — calmly.

1. Make sure your radio is **On**.
2. Select VHF Channel 16.
3. **Press Talk button and say:**
“MAYDAY — MAYDAY — MAYDAY.”
(Or “PAN — PAN — PAN,”
or “SECURITE — SECURITE — SECURITE.”)
4. **Say:**
“THIS IS [your vessel name or call sign].” Repeat three (3) times.
5. **Say:**
“MAYDAY (or “PAN” or “SECURITE”)
[your vessel name or call sign].”
6. **Tell where you are:**
(what navigational aids or landmarks are near).
7. State the nature of your distress.
8. State the kind of assistance needed.
9. Give number of persons aboard and conditions of any injured.
10. Estimate present seaworthiness of your vessel.
11. Briefly describe your vessel (length, type, color, hull).
12. **Say:**
“I WILL BE LISTENING ON CHANNEL 16.”
13. **End message by saying:**
“THIS IS [your vessel name or call sign] OVER.”
14. Release **Talk** button and listen. Someone should answer.
If not, repeat the call, beginning at item 3 above.



Keep the radio nearby. Even after your message has been received, the Coast Guard can find you more quickly if you can transmit a signal for a rescue boat to hone in on.

For Example

“Mayday — Mayday — Mayday”
 “This is Corsair — Corsair — Corsair” [or “Illinois 1234 AB” three (3) times]
 “Mayday Corsair (or Illinois 1234 AB)”
 “Navy Pier bears 220 degrees magnetic — distance 5 miles”
 “Struck submerged object and flooding — need pump and tow”
 “Four adults, three children aboard — no one injured”
 “Estimate we will remain afloat one-half (½) hour”
 “Corsair (or Illinois 1234 AB) is 26 foot sloop with blue hull and tan deck house”
 “I will be listening on Channel 16”
 “This is Corsair (or Illinois 1234 AB)”
 “Over”

It is a good idea to write out a script of the message form and post it where you and others on your vessel can see it when an emergency message needs to be sent.

Marine Distress Procedure – DSC

Digital Selective Calling (DSC) is a semi-automated system that will allow you to press the **Distress** button from any routine to make a distress call. When the distress button is pressed, all other channels go to **Standby** mode and allow the digitally encoded “pre-programmed” message to take precedence. Important information such as your MMSI number, position and name will be transmitted on Channel 16. The distress alarm will sound for two (2) minutes or until the alarm is cleared.

The DSC system allows you to choose a “pre-programmed” distress call such as: “Man Overboard, Sinking, Collision.” There are many pre-programmed choices to choose from. If a GPS is connected to your radio, your coordinates will also be sent to the Coast Guard as well as to other vessels that are within range of the transmission. DSC calling also allows the user to initiate and receive distress, urgent, safety, routine, position request, position send and group calls between vessels equipped with DSC capable radios.



WARNING

This radio will generate a digital maritime distress and safety signal to help facilitate search and rescue. This radio must be used only within communication range of a shore based VHF station with a distress and safety watch system. The range of the signal may vary, however, under normal conditions should be approximately 20 nautical miles.



Included In This Package

Installation And Start-Up

Included In This Package

You should find all of the following items in the package with your CobraMarine VHF radio:

Transceiver*



Transceiver Surface Mount Kit



Microphone



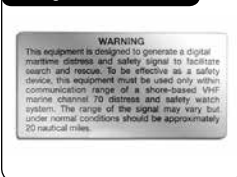
Microphone Mounting Kit



Operating Instruction Manual



Warning Sticker



GPS Interface Cable

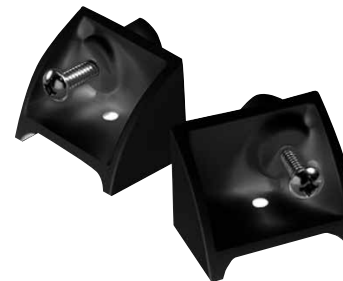


Accessories Order Info

Installation And Start-Up

Optional Accessories

You can find quality Cobra products and accessories at your local Cobra dealer, or in the U.S.A., you can order directly from Cobra.



Item #
Description

CM 210-001

Flush Mount Kit

Ordering From U.S.A.

Call 773-889-3087 for pricing or visit www.cobra.com.

For Credit Card Orders

Call 773-889-3087 [Press one from the main menu] 8:00 a.m. to 5:30 p.m. Central Time, Monday through Friday.

Make Check or Money Order Payable To

Cobra Electronics, Attn: Accessories Dept.,
6500 West Cortland Street, Chicago, IL 60707 U.S.A.

To Order Online

Please visit our website: www.cobra.com